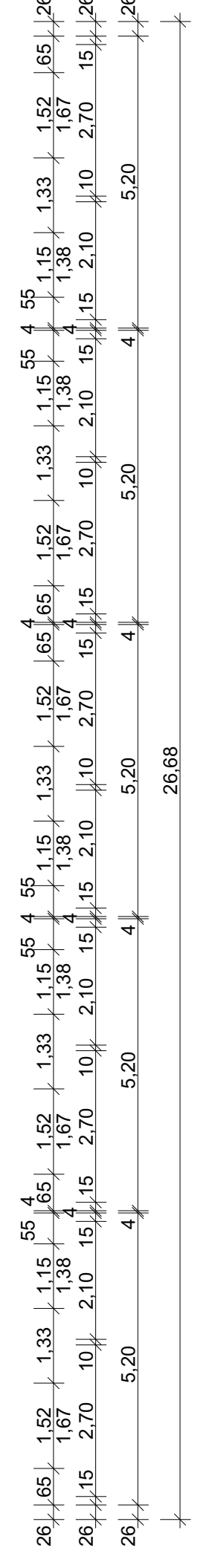
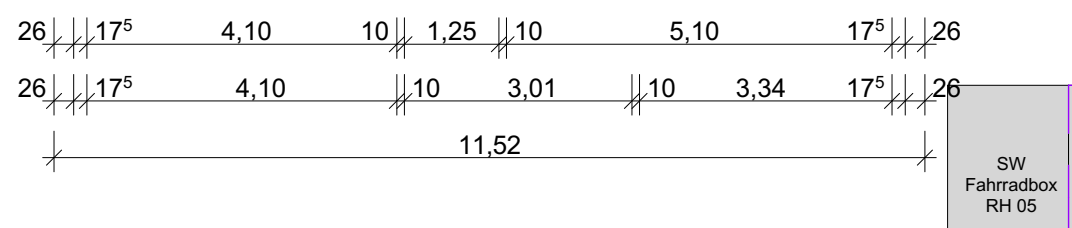
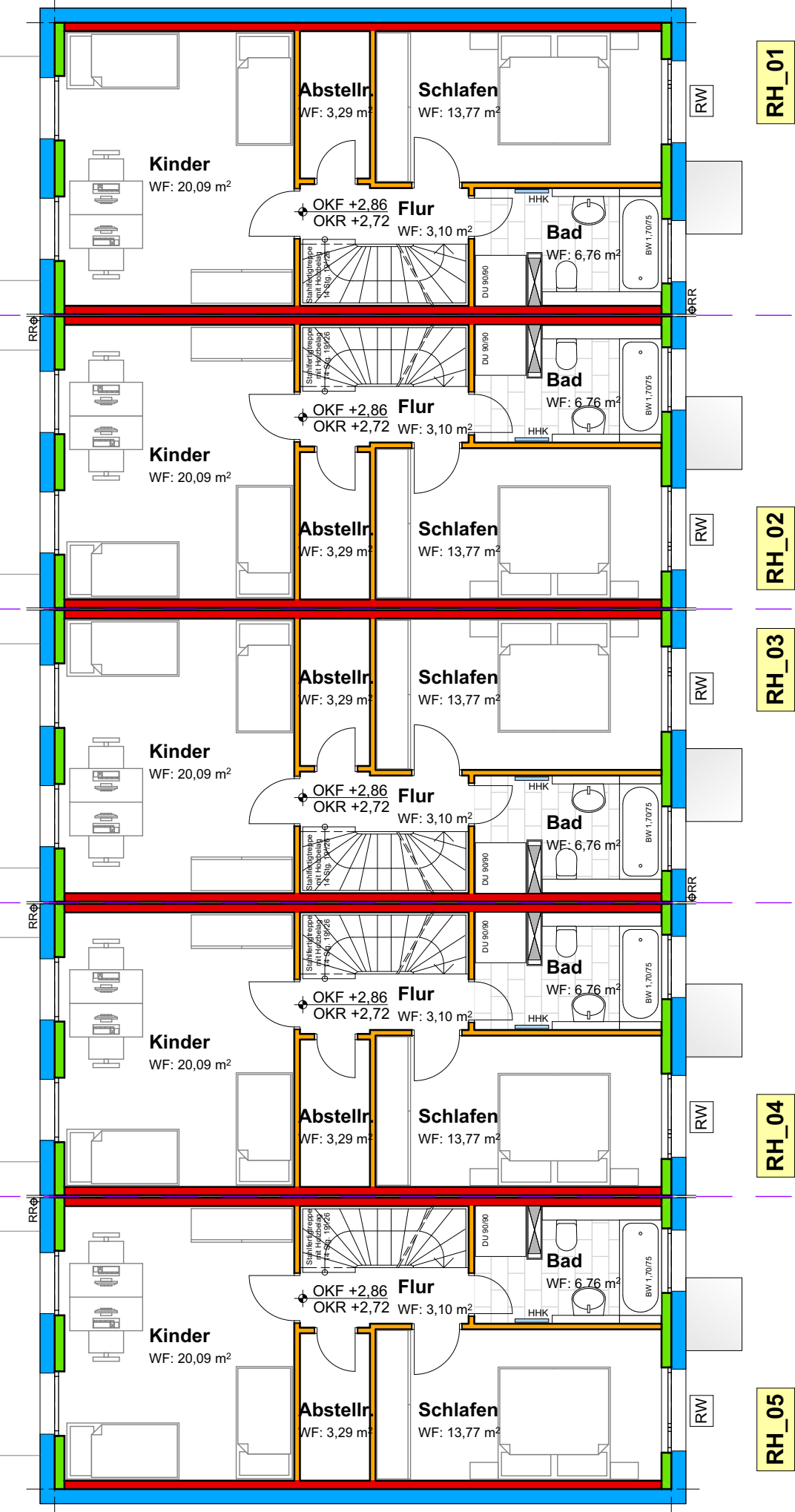
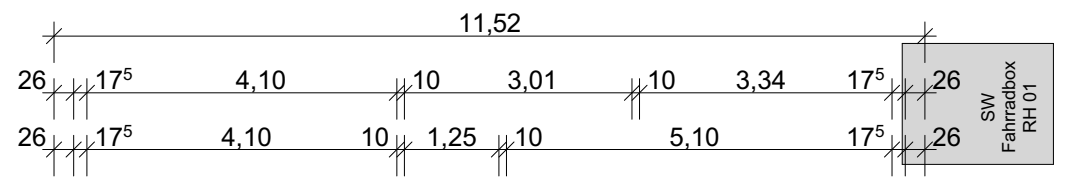
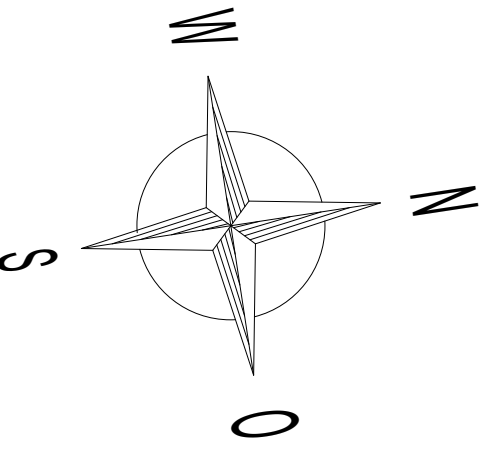
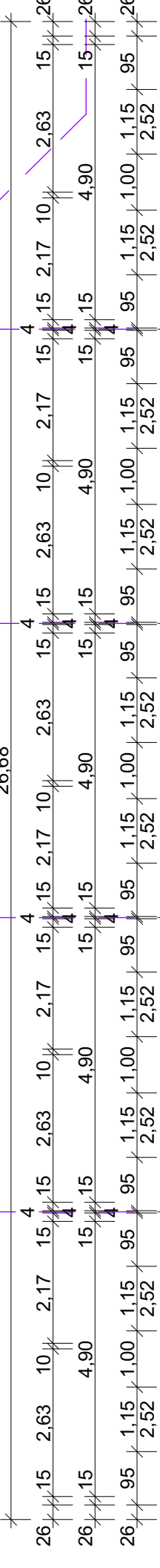
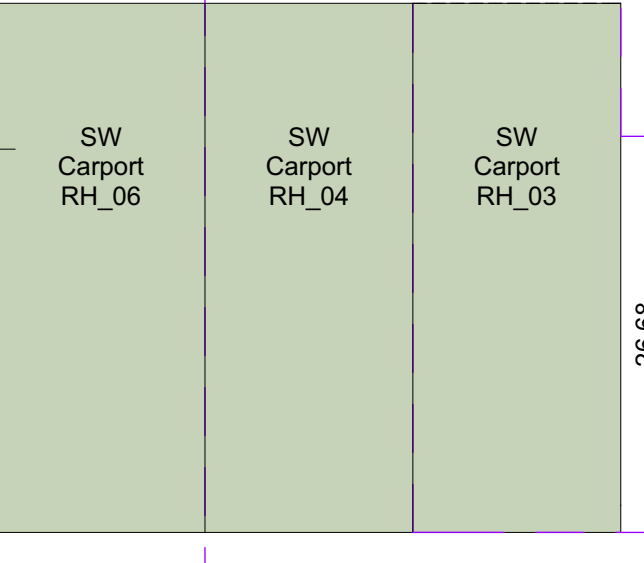
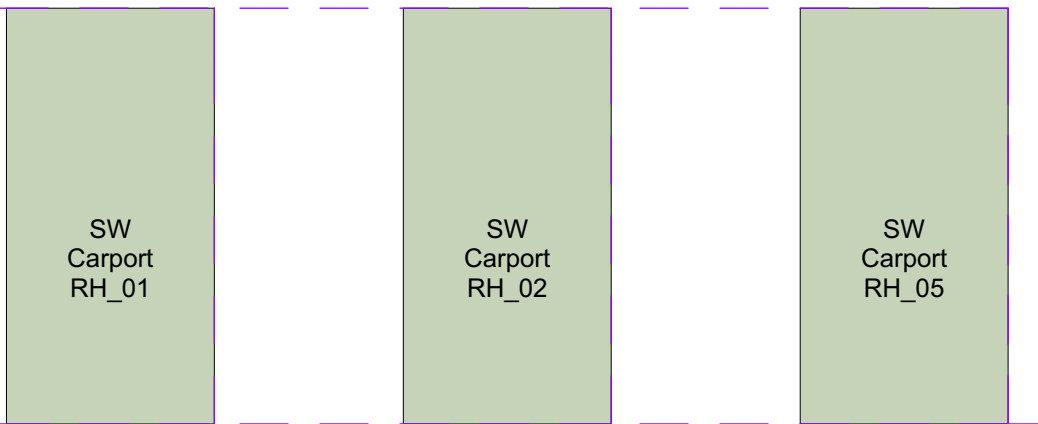
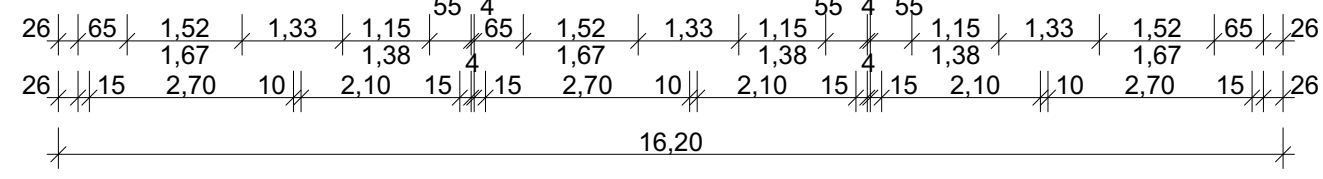
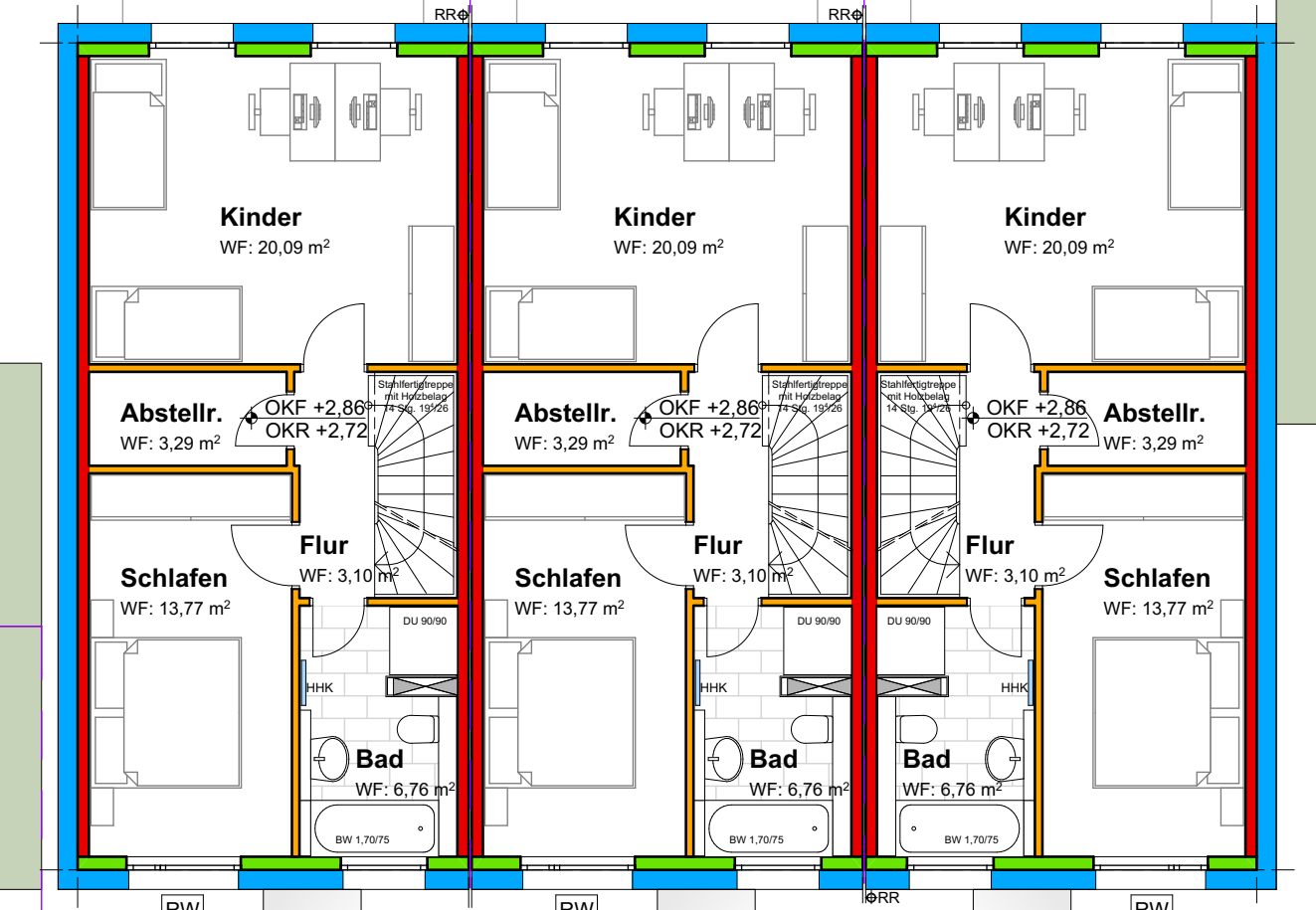
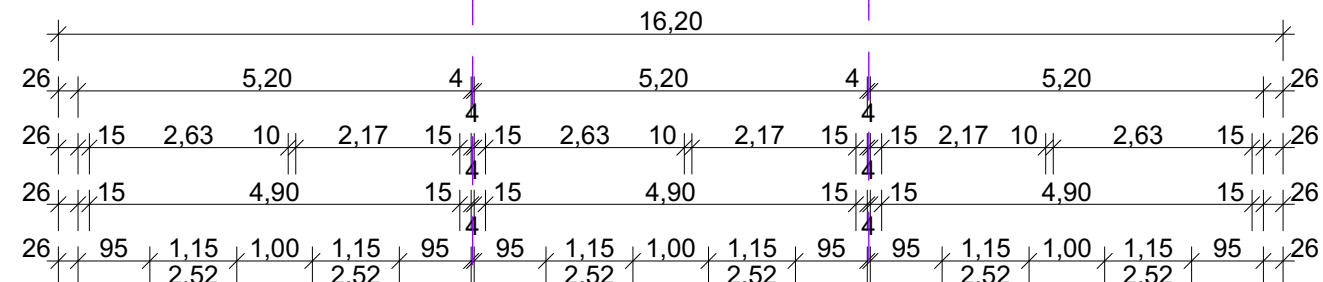
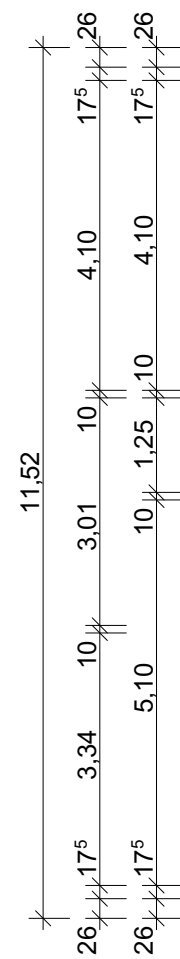


# Landstraße



INDEX	DATUM	ÄNDERUNGEN
A	-	-

<b>weisenburger bau</b>	
Ludwig-Erhard-Allee 21 • 76131 Karlsruhe	
PROJEKT	<b>Neubau von 8 Reihenhäuser, 8 Carports und 8 Stellplätzen</b> Landstrasse <b>76547 Sinzheim</b>
PLANUNGSPHASE	<b>Baueingabe</b>
PLANINHALT	<b>Obergeschoss</b> <b>RH 01-08</b>
PLANBEZEICHNUNG	BE 03_ARCH_01-08_BE_OG_2023.05.11
BAUHERRSCHAFT	<b>Hoepfner Amboisé</b> <b>Liegenschaft GmbH &amp; Co.KG</b> Rintheimer Strasse 33 76131 Karlsruhe
PLANVERFASSER	<b>Architekturbüro</b> <b>Harald Klippert</b> Riefstahlstrasse 8 76133 Karlsruhe